



HAOBOWEI
HOTEL FURNITURE
— 豪柏威 —

Foshan Haobowei Furniture Co., Ltd.
hbwhotelfurniture.com



4-Star Resort Hotel Furniture King Size Bedroom Set with Curved Backrest Repair Services

Our Product Introduction

for more products please visit us on hbwhotelfurniture.com

Basic Information

- Certification: ISO9001, SGS



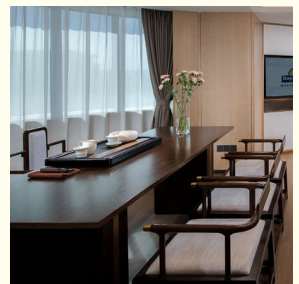
Days Hotel
BY WYNDHAM
Foshan, Guangdong, China
Hotel Furniture Source Factory

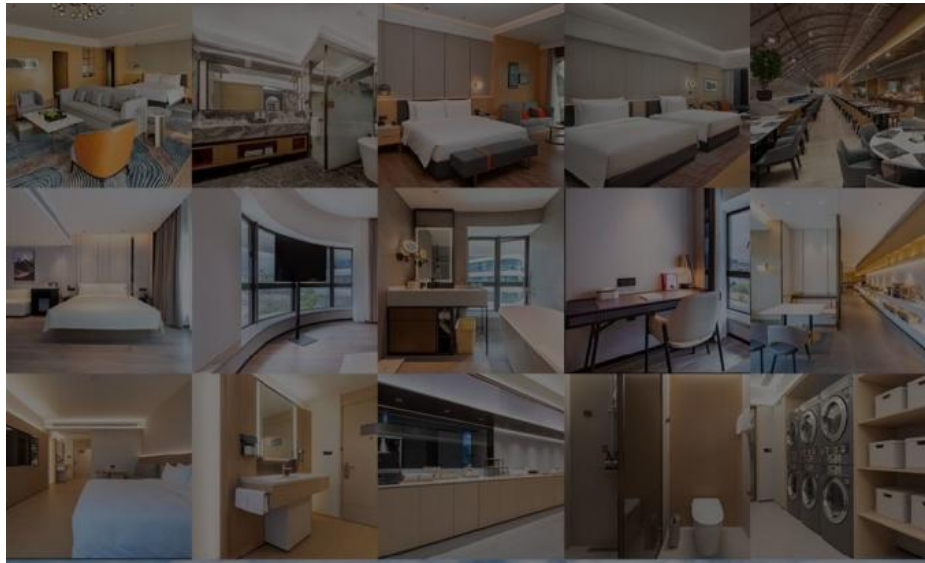
Product Specification


- Model NO.: WYNDHAM-Days-MZ
- Standard For Hazardous Substances Test: ISO 14184
- Customized: Customized
- Rotary: Fixed
- Condition: New
- Function: Hotel Furniture Bedroom Sets
- Delivery Time: 30-60 Days
- MOQ: 10 Sets
- Quality: The Internal Structure Is Guaranteed For 5 Year
- Three Guarantees: Three Guarantees Within 2 Years
- Repair: Provide Repair Services For A Lifetime
- QC Check: Check Three Times Before Loading.
- OEM/ODM: Can Be Available
- Design: Customization Available



More Images

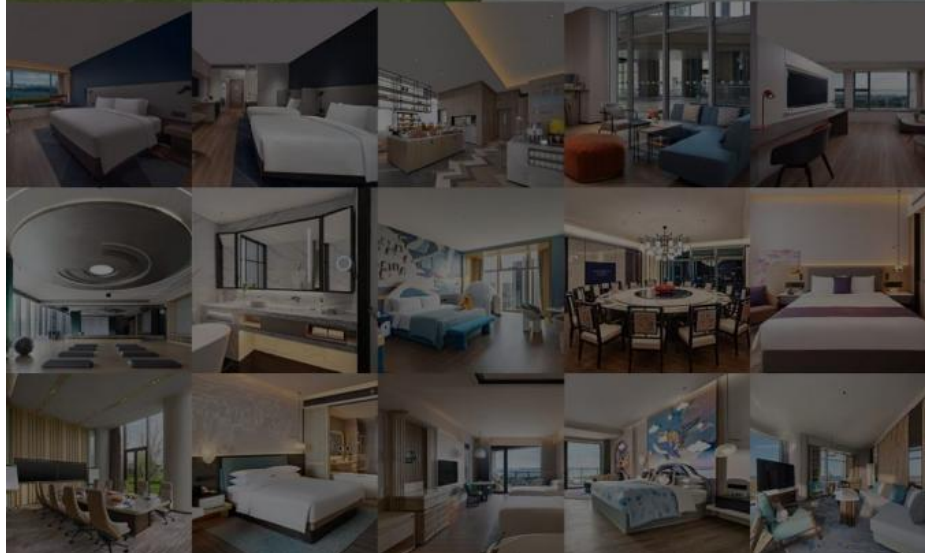




 **HAOBOWEI**
HOTEL FURNITURE

Our professional design and production team is at your service 24/7.

- Material selection
- Color options
- Style optional
- Customized packaging
- Size customization



WYNDHAM

HOTELS & RESORTS

Meizhou Golden Leaf Days Hotel



HAOBOWEI HOTEL FURNITURE

Soft decoration, fixed decoration, and
activity furniture are all from Haobowei



The decoration design keeps up with the trend of the times, using the latest design elements and materials, giving people a sense of avant-garde yet comfortable.



Product List

| Item No. | Item Name | (Dimension/m) L*D*H | QTY | PCS | Material | contain | Excluding |
|---------------|--------------------------------|------------------------|-----|-----|--|--|---------------------------|
| King Bed Room | | | | | | | |
| 1 | Entrance doors and door frames | 1025*195*2200 | 1 | set | | | All door control hardware |
| 2 | Open wardrobe | 1080*500*2200 | 1 | set | | Stainless steel clothes hanging pole and stainless steel anti slip strip | Lighting fixtures |
| 3 | TV background | 1600*12*2700 | 1 | set | | Stainless steel frame edge, quick installation base | Sockets |
| 4 | Bed background | 4915*80*1200 | 1 | set | Substrate: E1 grade flame retardant plywood+natural straight grain white oak dyed wood veneer Paint: according to color palette, national environmentally friendly paint Process: According to the drawing | High rebound sponge and fabric | Sockets |

| | | | | | | | | |
|----|---------------------------|---------------|----|---|--------------|--|--|--|
| 5 | Wood veneer | 12MM | 89 | 7 | square meter | | | Anchor line and stainless steel decorative strip |
| 6 | Sliding door | 820*45*2200 | 1 | | set | | | All door control hardware |
| 7 | Wash basin | 1510*18*850 | 1 | | set | | | Stone and lighting fixtures |
| 8 | Desk | 700*750 | 1 | | set | | | Just make a countertop |
| 12 | Bedside cupboard | 550*500*550 | 2 | | piece | | | |
| 13 | Bedstead | 1800*2000*300 | 1 | | piece | | | |
| 14 | Liquor cabinet | 800*500*880 | 1 | | piece | | | |
| 3 | TV background | 1600*12*2700 | 1 | | set | Substrate: E1 grade flame retardant plywood+high-quality fabric Paint: according to color palette, national environmentally friendly paint Process: According to the drawing | Stainless steel frame edge, high-quality fabric, and fast fitting base layer | Sockets |
| 9 | Chair | routine | 1 | | set | Substrate: White wax wood solid wood frame Paint: according to color palette, national environmentally friendly paint Process: According to the drawing | High quality sponge, fabric and leather soft bag | |
| 10 | Leisure chairs and pedals | 550*500 | 1 | | set | | | |



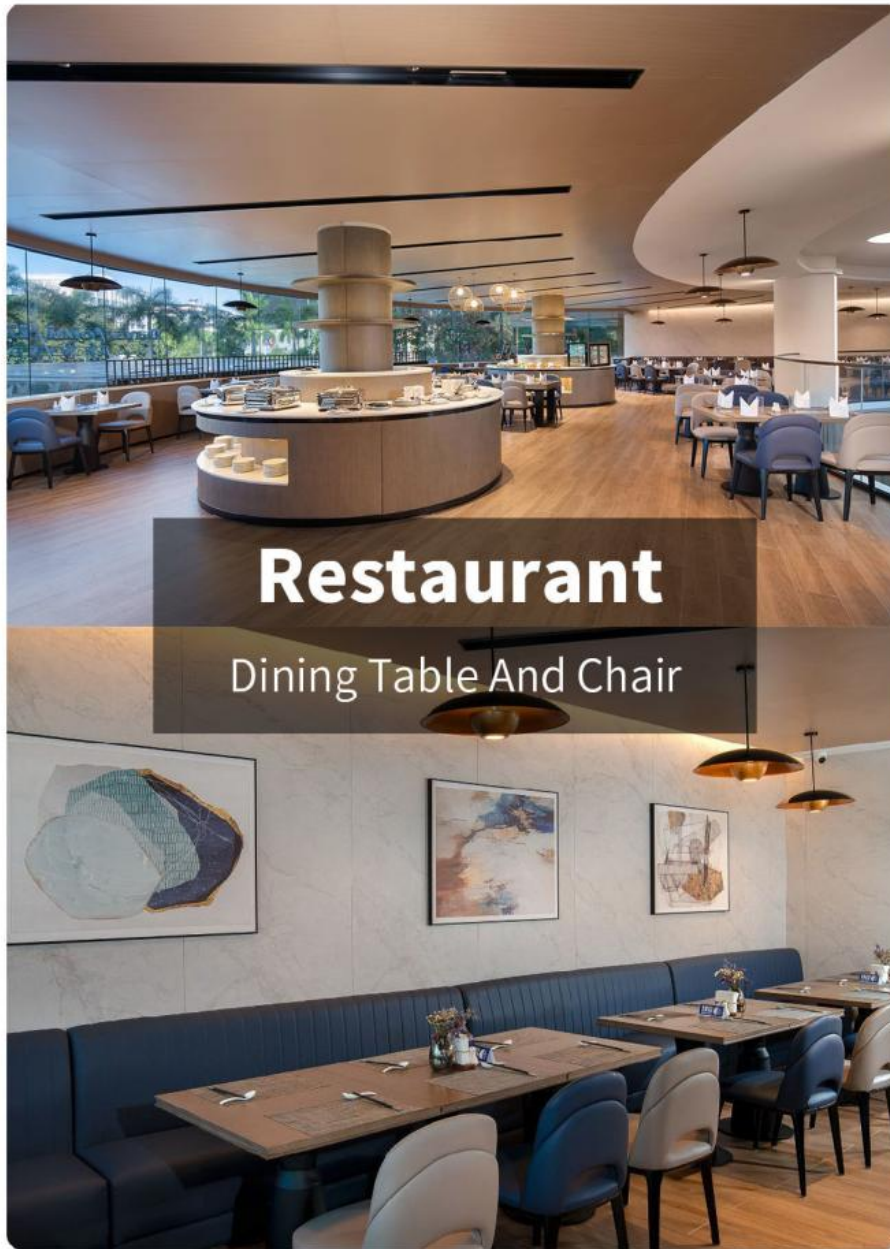
*For more material details, please consult us



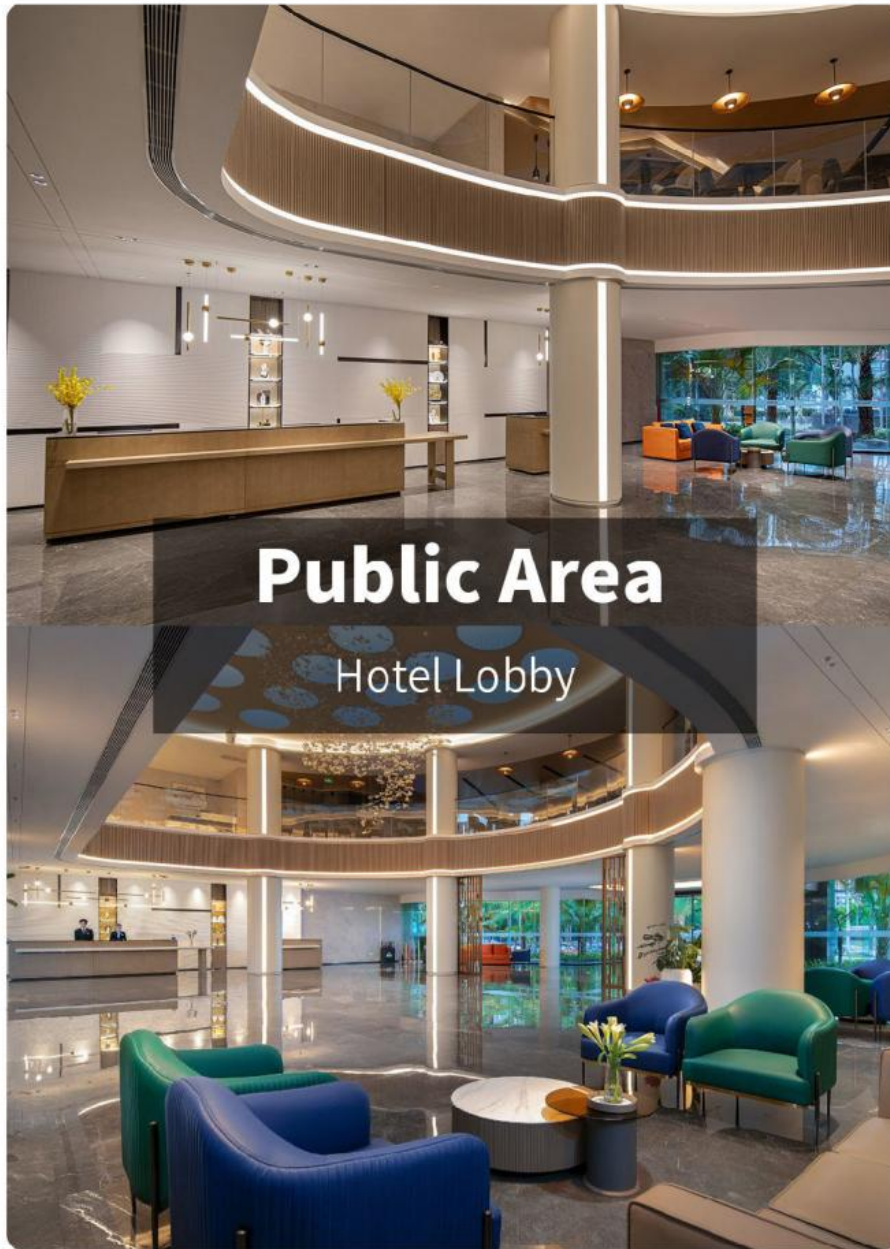
*For more material details, please consult us



*For more material details, please consult us



*For more material details, please consult us



*For more material details, please consult us



Public Area
Multi-function Meeting Room

*For more material details, please consult us



Public Area
Multi-function Meeting Room

*For more material details, please consult us



*For more material details, please consult us



HAOBOWEI
HOTEL FURNITURE

Customizable Materials



- Full top grain leather
- Semi top grain leather
- Top grain leather
- More



- Solid wood board.
- Solid wood multi-layer board
- Solid wood particle board.
- More



- North American black walnut.
- North American hard maple.
- White oak
- More



- Cotton cloth
- Linen cloth
- Cotton and linen cloth
- More

*For more material details, please consult us

Customizable Materials

Genuine leather



Full top
grain leather



Semi top
grain leather



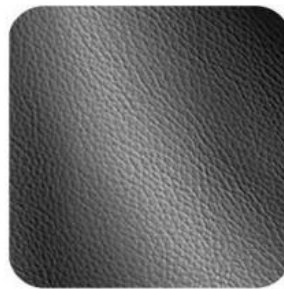
Top grain
leather



Microfiber
leather



Nappa
leather



tumbled
leather



Full frosted
leather



Lightly frosted
leather



Waxed oil
leather

*For more material details, please consult us



HAOBOWEI
HOTEL FURNITURE

Customizable Materials

Imitation leather



Polyurethane Synthetic Leather

It is an artificial synthetic material, which has the appearance and texture similar to that of natural leather, but the cost is relatively low.

Ecological leather

It can simulate the appearance and touch similar to that of natural leather and has certain performances such as abrasion resistance and scratch resistance.



Science and technology fabric

Technical fabric features similar appearance and texture to natural leather, good breathability, abrasion resistance, easy cleaning, high cost-effectiveness and rich colors.

*For more material details, please consult us

Customizable Materials

Choose the board



Medium Density
Fiberboard



Solid Wood
Particle Board



Solid Wood
Multi-layer Board



Solid Wood
Board



Decorative
High-pressure Laminate



Moisture-proof
Board

Choose the craft.



Glossy



Matte



Wood Veneer

*For more material details, please consult us

Customizable Materials

Solid wood



Black Walnut
Wood



Hard Maple
Wood



White oak Wood



Cherry Wood



aSH Wood



Red Oak Wood



Fraxinus
Mandshurica



Beech Wood



Pine Wood

*For more material details, please consult us

Customizable Materials

Cloth



Cotton cloth



Linen cloth



Velvet cloth



Cotton and linen
cloth



Canvas



Corduroy



Chenille



Oxford



Frosted Velvet

*For more material details, please consult us

Factory

Shooting



Global supplier of star rated hotels

21 years of professional hotel furniture at the source factory



A common choice among many star rated hotels

1000+successful hotel cases



Project

Cases

Project Cases

Soft decoration, fixed decoration, and activity furniture are all from HAOBOWEI



HOLIDAY INN
EXPRESS



HYATT HOTEL



WYNDHAM
HOTELS&RESPTS



MARRIOTT
BONVOY



SHANGRI-LA



MERCURE HOTEL



JI HOTEL



ATOUR HOTEL



More
project cases

*For more material details, please consult us

Industry Qualifications



HAOBOWEI
HOTEL FURNITURE

The source factory in Foshan, Guangdong, China.



Process team

With over 200 technicians, we serve you throughout the entire process from customized production to quality inspection



Advanced equipment

Equipped with a specialized product research and development center, the company has introduced a complete set of world-class equipment



Strict testing

Strict process flow, acceptance standards, and advanced quality assurance system require strict testing before leaving the factory



After sales guarantee

1. Internal structure guaranteed for five years
2. Two years and three guarantees
3. Lifetime warranty





SHIPPING & PAYMENT



1.How to get a quote quickly?

All of our products can be customized. We can meet you any requirement of the size, shape, design, logo. we will be appreciated if you can provide the information below before quote you the price:

- A.Bag style.
 - B.Material structure and thickness.
 - C.Packaging.
 - D.Demension (width & length & height)
 - E.The logo and color request.
 - F.If possible,pls provide the artwork of the products and packaging.If you are not clearly,we will recommend for you.
- With above information we can quote you the exact price immediately.

2.What is your MOQ?

A: If customer have agent in China arrange the delivery shipping for you, there will be no MOQ limited, that means customer can order 1 piece and the price will be offered as EXW factory price.

B: if customer needs us arrange the delivery shipping, the MOQ will be one set (the total cubic number of the order must more than 3 CBM). But mixed order can be accepted. That means each design each item customer can select only one piece, till 3CBM full.

C: About Min Order Quantity, normally is one 20ft container, several items mixed.Small quantity is acceptable for trial order.

3.What is the Shipping Cost?

If you want to know the shipping freight, The shipping cost is determined by the destination port, weight, packing size, total CBM of the goods . It is difficult for us to quote you the exactly shipping fee without knowing your total quantity of the order and your destination sea port; we will quote you the good shipping cost after receive your feedback.

4.About Price:

Sample order:

Sample is available for customer to check the quality.

We will charge double price for sample, but will return after ordering.

The price is negotiable. It can be changed according to your quantity or package.

5.Trade terms: EXW.FOB.CIF.

6.What is the transportation?

We are able to send the goods by air/ Express delivery/ Sea.The transportation way is depended on the customer.

7.Package & Carton:

All tables packed in KD, chairs is semi-KD(meaning the seat cushion is unfixed). Use 5-layer K=A 210pounds export standard carton. Your shipping marks can be printed on a carton.

8.About OEM:

OEM Is available, you can send your own design or picture to us.We can make the product as you like.

9.Payment Term or other question:

T/T and Western Union are accepted .

T/T:30% Deposit ,balance paid before shipment

10. Lead Time:

About 20-35 days for 1*40HQ after sending deposit.

11. Guarantee:

We guarantee the quality:

For damaged and missing items, we will send replacement after getting related details, such as photo or video.

12. Where is your factory located? How can I visit there?

Our factory is located at No. 2, Longshou Development Zone, Shibu Neighborhood Committee, Longjiang Town, Shunde District, Foshan City. Warmly welcome you to visit our factory! When we have free time, we can pick you up anywhere, don't forget to contact us first.

Want further information pls email me or chat with me on TradeManager directly.

Welcome to Foshan HAOBOWEI Furniture!



Foshan Haobowei Furniture Co., Ltd.



188 2323 6674



hbwfurniture1993@163.com



hbwhotelfurniture.com

No.4 Longfeng Road, Shibu Industrial Zone, Longjiang Town, Shunde District, Foshan City, Guangdong Province