



**HAOBOWEI**  
HOTEL FURNITURE  
— 豪柏威 —

**Foshan Haobowei Furniture Co., Ltd.**  
hbwhotelfurniture.com



## OEM/ODM Luxury Style Standard Double Bedroom Set For 4 Star Hotel Furniture In Foshan

Our Product Introduction

for more products please visit us on [hbwhotelfurniture.com](http://hbwhotelfurniture.com)

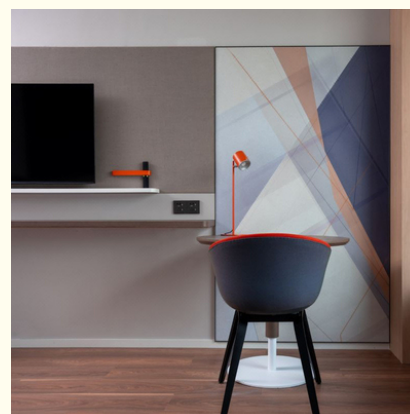
### Basic Information

- Certification: ISO9001, SGS

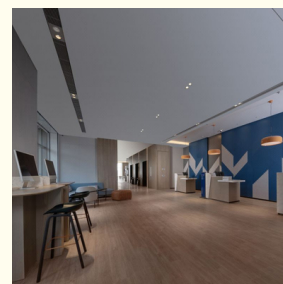
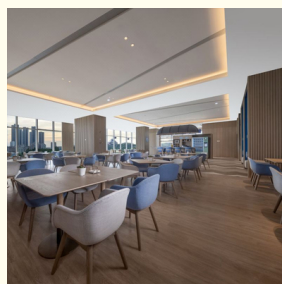
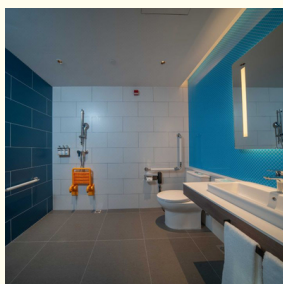
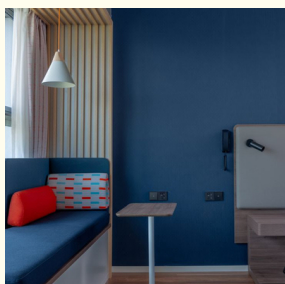


### Product Specification

- Model NO.: HOLIDAY INN EXPRESS-SZ
- Standard For Hazardous Substances Test: ISO 14184
- Customized: Customized
- Rotary: Fixed
- Condition: New
- Function: Hotel Furniture Bedroom Sets
- Delivery Time: 30-60 Days
- MOQ: 10 Sets
- Quality: The Internal Structure Is Guaranteed For 5 Year
- Three Guarantees: Three Guarantees Within 2 Years
- Repair: Provide Repair Services For A Lifetime
- QC Check: Check Three Times Before Loading.
- OEM/ODM: Can Be Available
- Design: Customization Available



### More Images





**HAOBOWEI**  
HOTEL FURNITURE

Our professional design and production team is at your  
service 24/7.

- Material selection
- Color options
- Style optional
- Customized packaging
- Size customization





Holiday Inn Express Shenzhen Guangming



Soft decoration, fixed decoration, and activity furniture are all from Haobowei



Every detail is a profound interpretation of modern aesthetics, and every breath is immersed in the harmonious symphony of art and design.



#### Holiday Inn Express Product List

Item Name	Material	Q P T C Y S	Using Zones
Toilet Storage Cabinet	1. 450 x 200 x 860 mm high light white Fumijia fireproof board veneer storage cabinet 2. 20mm thick light gray artificial stone, 70 * 1250mm, 200 * 450mm panel 3. Stone specific adhesive 4. 12mm thick fire-resistant plywood 5. Double layer 40x20x3mm thick galvanized flat steel with a horizontal spacing of 600mm 6. All necessary auxiliary materials and auxiliary work for cutting, low-carbon welding rods, rust proof paint, welding, anchoring, etc	1	Pi e c e Beside the toilet

Open wardrobe, luggage cabinet, hanging pole	1. 1540 x 600 x 2400mm high wardrobe 2. White Fumijia fireproof board veneer 3. Shanwen Fumeijia fireproof board veneer 4. Three proof hard fabric	Pi e After 1 c entering e the door
	5. Light strip specification and model: Brand: Xidun; Light strip light source 3000K; 100 to 120 light beads per meter; Chip: Three Amps; Transformer: 24V; 6. Auxiliary materials and auxiliary work required for drawing black steel stainless steel anti slip strips, base plates, light steel keel, galvanized framework, putty, glue, welding rods, anti rust paint, embedded parts, anti termite treatment, etc.	
The television background wall	1. Book desktop: 3 300 x 550 x 40 mm; The TV background includes a magazine rack of 3300 * 965 * 23mm, and a white fireproof board with a storage panel of 1310 * 30 * 120; Writing desk cover: 3300 * 175 * 20mm 2. Wood grain fireproof board 3. Light colored fireproof board veneer 4. All necessary auxiliary materials and auxiliary work such as base plate, galvanized framework, adhesive, welding rod, embedded parts, anti termite treatment, etc.	TV 1 S entertain et ment area
Minibar	1. 1000x600x810mm high mini bar 2. Dark gray Fumeijia fireproof board 3. Orange Fumeijia fireproof board 4. Dark gray Fumijia anti gang board 5. Auxiliary materials and auxiliary work required for damping hinges, fire-resistant plywood, galvanized framework, cutting, anti termite treatment, etc	1 S Televisio et n area
Wash basin cabinet	1. 1200x600x820mm high washbasin 2. 20mm thick light colored artificial stone 3. 50mm high light colored artificial stone 4. Mountain grain wood veneer 5. All necessary auxiliary materials and auxiliary work for stone drilling, chamfering and edge grinding, stone specific adhesive, base plate, anchoring, etc	Pi e Toilet 1 c area e
Lockers	1. 400x600 x2400mm high mountain grain wood veneer cabinet 2. Door leaf decorative coating 3. Adhesive 4. Base layer board 5. All necessary auxiliary materials and auxiliary work for damping hinges, putty, cutting, anchoring, etc	Pi Next to e the 1 c entrance e door
Headboard	W (3200+525) * D65 * H1150 is made of E1 grade eucalyptus multi-layer board substrate, with Fumeijia fireproof board veneer, concealed against the wall, bottom plate, and back plate. The bottom plate of the soft package is made of 9mm eucalyptus multi-layer board, high-density sponge three proof fabric soft package, and the bottom box of the wiring box and lamp holder bottom box	1 S Sleep et zone
Widened wood veneer lines	75x20mm thick mountain grain wood veneer line	5. m Sleep 5 zone
Fireproof board wall	Light colored fireproof board veneer	1. m 17 toilet 2 6
Wooden veneer window sill panel	12mm thick wood grain fireproof board	2. m 8 2
Wooden veneer skirting line	50x12mm thick white fireproof board skirting line	20 .6 m 1



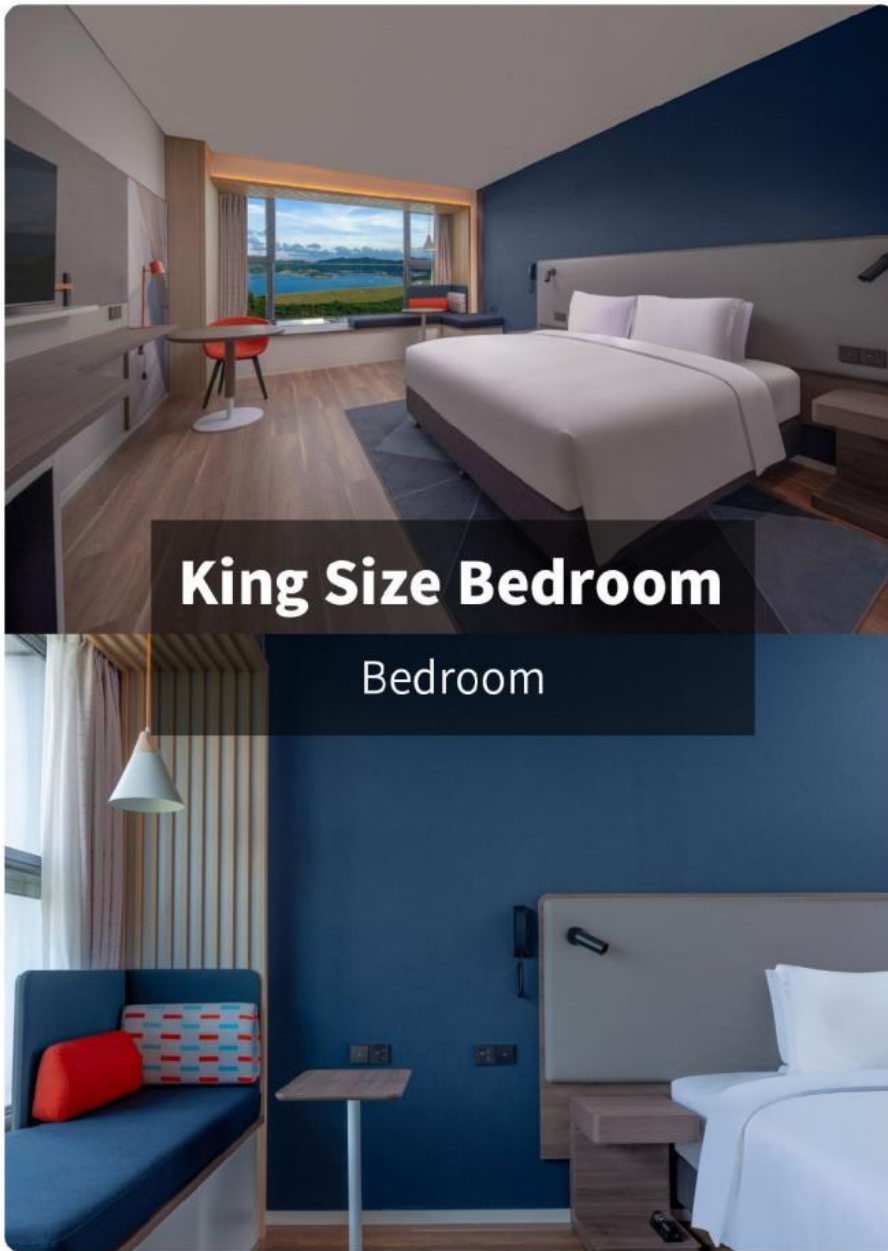
Wood veneer wall	12mm thick wood grain color fireproof board	5.432	Foyer and sleeping area
White fireproof board finish	12mm thick white fireproof board veneer	1.43285	
Convex convex wood veneer wall surface	20mm thick light gray fireproof board	1.38238	
Wooden veneer grille screen	1. 50mm thick mountain grain wood veneer grille screen 2. 8 diameter metal circular pipe through	1.44	
Wall wood veneer lines	20 * 25mm thick mountain grain wood veneer	18	
Suspended ceiling wood veneer lines	20 * 25mm thick mountain grain wood veneer	31	
Convex convex wood veneer ceiling	Light gray fireproof board	2.59	
Single door entry, door frame	1. 50mm thick mountain grain Fumeijia fireproof board decorative panel door 2. Same color fireproof panel door frame 3. Galvanized skeleton, B1 flame retardant plywood, solid wood/plywood flame retardant filling 4. All necessary auxiliary materials and auxiliary work, including concealed door closers, automatic dust bars, anti-theft buckles, concealed hinges, cat eyes, sealing strips, 5 * 5 recessed seams, etc 5. There must be certain fire and smoke prevention requirements, which require solid wooden doors with a thickness of no less than 44mm, and the entire door (including doors, door frames, and hardware components) must have a fire resistance rating of 20 minutes (a test report must be provided), with smoke proof door seals installed at the bottom	2.4	Entrance doors
Wooden veneer single door, door frame	1. 50mm thick mountain grain Fumeijia fireproof board veneer single door 2. White painted door frame 3. 12mm thick fire-resistant plywood 4. All necessary auxiliary materials and auxiliary work such as hinges, door handles, core locks, door stops, sealing strips, etc. (Jianlang Hardware)	1.92	Entrance doors



\*For more material details, please consult us



\*For more material details, please consult us

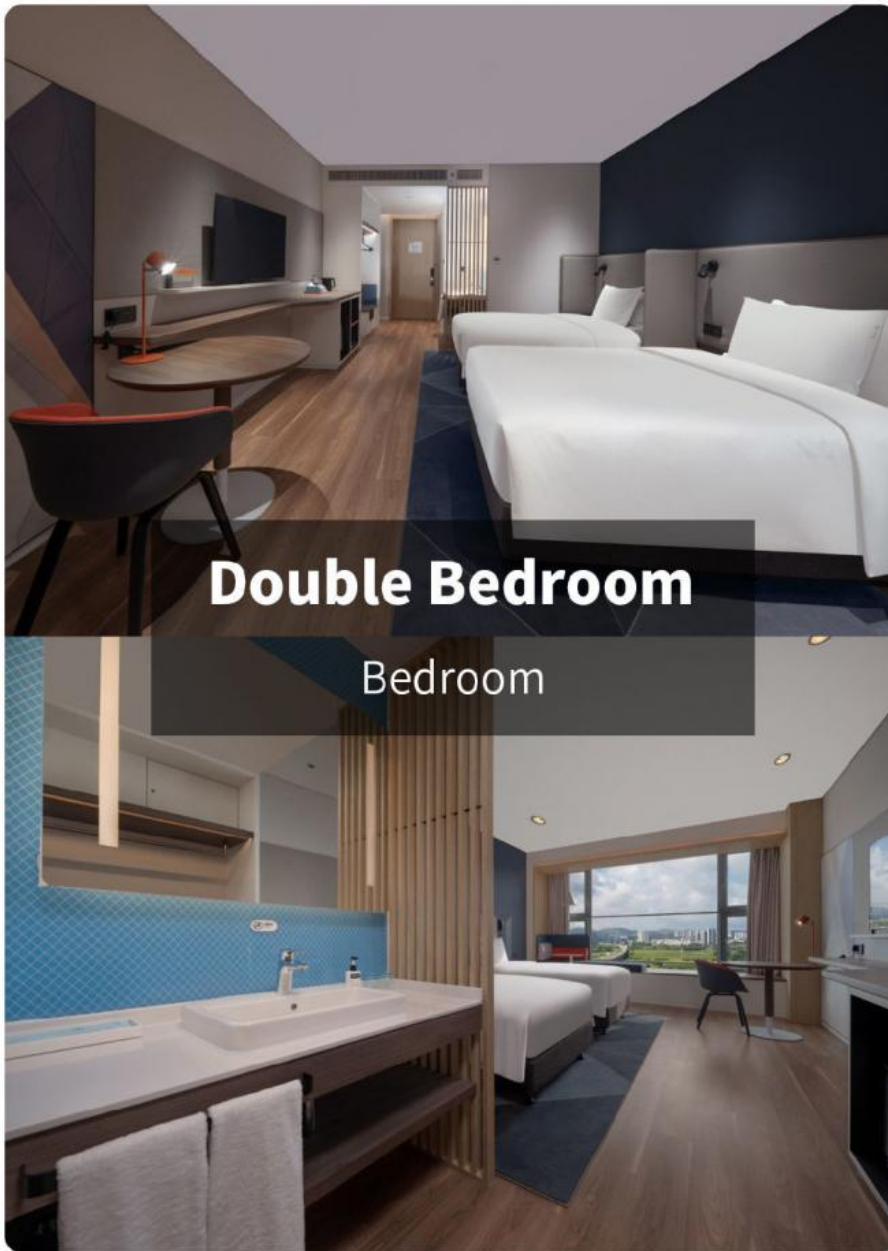


## King Size Bedroom

### Bedroom

\*For more material details, please consult us



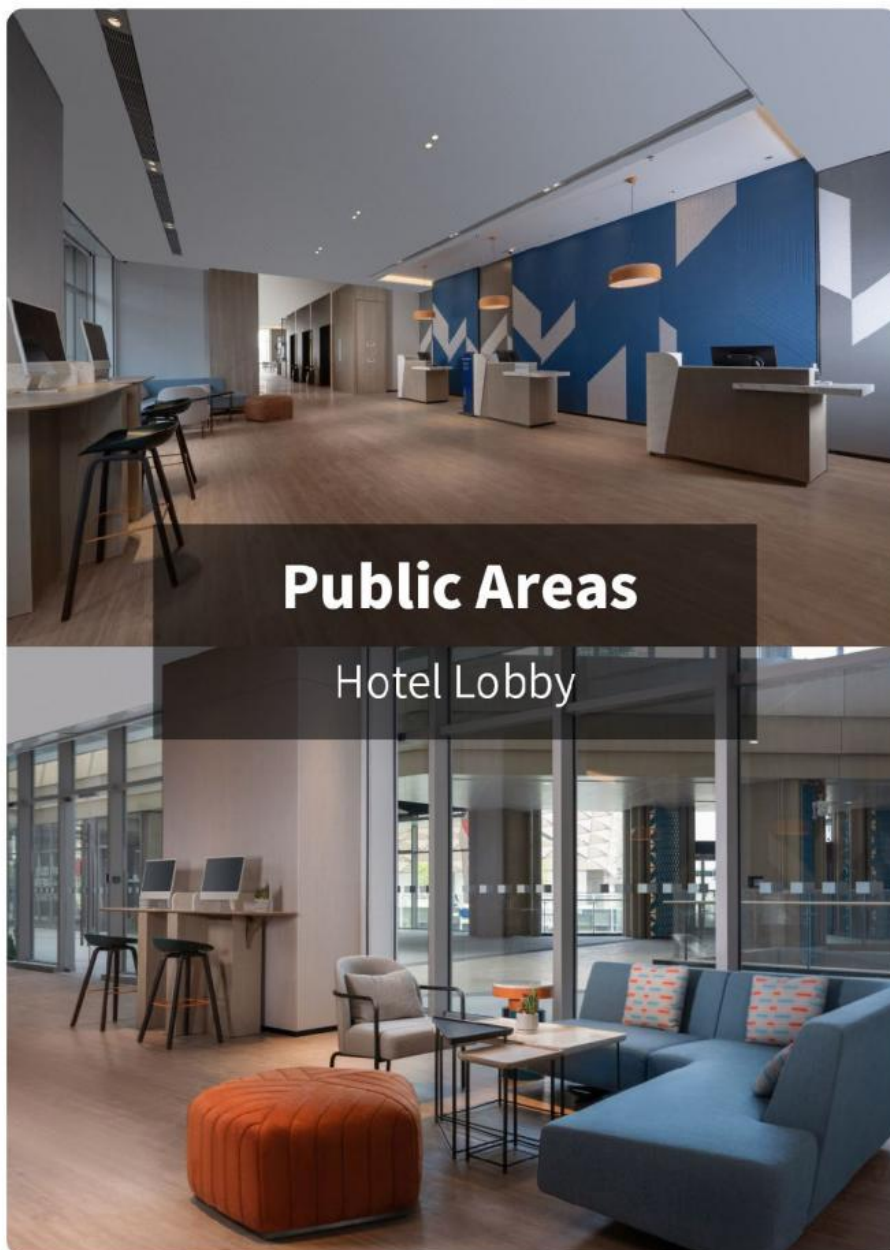


**Double Bedroom**  
Bedroom

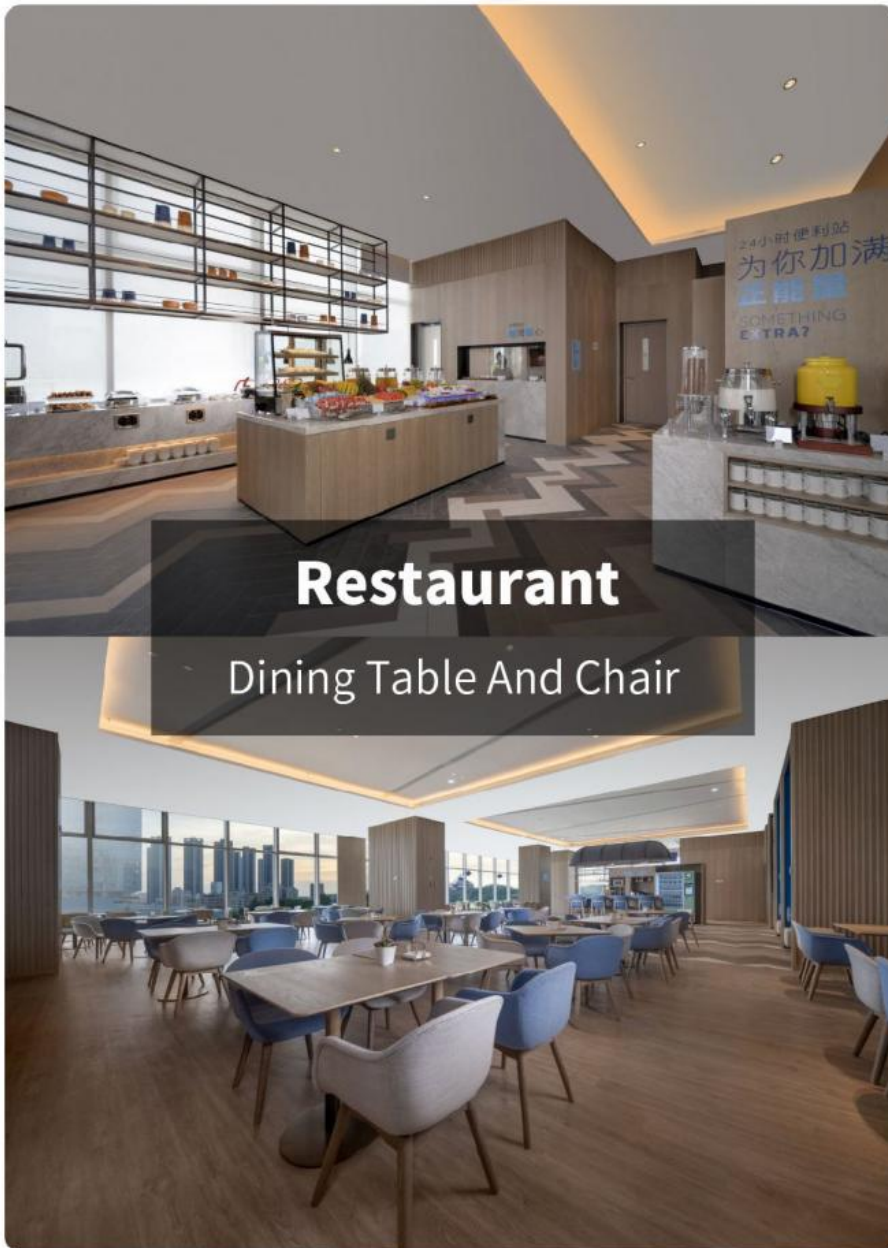
\*For more material details, please consult us



\*For more material details, please consult us



\*For more material details, please consult us



\*For more material details, please consult us





\*For more material details, please consult us



\*For more material details, please consult us



**HAOBOWEI**  
HOTEL FURNITURE

## Customizable Materials



### Leather

- Full top grain leather
- Semi top grain leather
- Top grain leather
- More



### Board

- Solid wood board.
- Solid wood multi-layer board
- Solid wood particle board.
- More



### Wood

- North American black walnut.
- North American hard maple.
- White oak
- More



### Cloth

- Cotton cloth
- Linen cloth
- Cotton and linen cloth
- More

\*For more material details, please consult us



## Customizable Materials

Genuine leather



Full top  
grain leather



Semi top  
grain leather



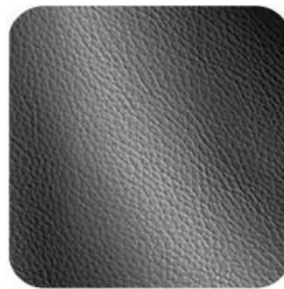
Top grain  
leather



Microfiber  
leather



Nappa  
leather



tumbled  
leather



Full frosted  
leather



Lightly frosted  
leather



Waxed oil  
leather

\*For more material details, please consult us





**HAOBOWEI**  
HOTEL FURNITURE

## Customizable Materials

### Imitation leather



#### Polyurethane Synthetic Leather

It is an artificial synthetic material, which has the appearance and texture similar to that of natural leather, but the cost is relatively low.

### Ecological leather

It can simulate the appearance and touch similar to that of natural leather and has certain performances such as abrasion resistance and scratch resistance.



#### Science and technology fabric

Technical fabric features similar appearance and texture to natural leather, good breathability, abrasion resistance, easy cleaning, high cost-effectiveness and rich colors.

\*For more material details, please consult us

## Customizable Materials

Choose the board



Medium Density  
Fiberboard



Solid Wood  
Particle Board



Solid Wood  
Multi-layer Board



Solid Wood  
Board



Decorative  
High-pressure Laminate



Moisture-proof  
Board

Choose the craft.



Glossy



Matte



Wood Veneer

\*For more material details, please consult us

# Customizable Materials

## Solid wood



Black Walnut  
Wood



Hard Maple  
Wood



White oak Wood



Cherry Wood



aSH Wood



Red Oak Wood



Fraxinus  
Mandshurica



Beech Wood



Pine Wood

\*For more material details, please consult us



# Customizable Materials

## Cloth



Cotton cloth



Linen cloth



Velvet cloth



Cotton and linen  
cloth



Canvas



Corduroy



Chenille



Oxford



Frosted Velvet

\*For more material details, please consult us

Factory

Shooting





# Global supplier of star rated hotels

21 years of professional hotel furniture at the source factory



## A common choice among many star rated hotels

1000+successful hotel cases



Project

Cases

## Project Cases

Soft decoration, fixed decoration, and activity furniture are all from HAOBOWEI



HOLIDAY INN  
EXPRESS



HYATT HOTEL



WYNDHAM  
HOTELS&RESPTS



MARRIOTT  
BONVOY



SHANGRI-LA



MERCURE HOTEL



JI HOTEL



ATOUR HOTEL



More  
project cases

\*For more material details, please consult us

Industry Qualifications



**HAOBOWEI**  
HOTEL FURNITURE

# The source factory in Foshan, Guangdong, China.



## Process team

With over 200 technicians, we serve you throughout the entire process from customized production to quality inspection



## Advanced equipment

Equipped with a specialized product research and development center, the company has introduced a complete set of world-class equipment



## Strict testing

Strict process flow, acceptance standards, and advanced quality assurance system require strict testing before leaving the factory



## After sales guarantee

1. Internal structure guaranteed for five years
2. Two years and three guarantees
3. Lifetime warranty







## SHIPPING & PAYMENT



### 1.How to get a quote quickly?

All of our products can be customized. We can meet you any requirement of the size, shape, design, logo. we will be appreciated if you can provide the information below before quote you the price:

- A.Bag style.
  - B.Material structure and thickness.
  - C.Packaging.
  - D.Demension (width & length & height)
  - E.The logo and color request.
  - F.If possible,pls provide the artwork of the products and packaging.If you are not clearly,we will recommend for you.
- With above information we can quote you the exact price immediately.

### 2.What is your MOQ?

A: If customer have agent in China arrange the delivery shipping for you, there will be no MOQ limited, that means customer can order 1 piece and the price will be offered as EXW factory price.

B: if customer needs us arrange the delivery shipping, the MOQ will be one set (the total cubic number of the order must more than 3 CBM). But mixed order can be accepted. That means each design each item customer can select only one piece, till 3CBM full.

C: About Min Order Quantity, normally is one 20ft container, several items mixed.Small quantity is acceptable for trial order.

### 3.What is the Shipping Cost?

If you want to know the shipping freight, The shipping cost is determined by the destination port, weight, packing size, total CBM of the goods . It is difficult for us to quote you the exactly shipping fee without knowing your total quantity of the order and your destination sea port; we will quote you the good shipping cost after receive your feedback.

### 4.About Price:

Sample order:

Sample is available for customer to check the quality.

We will charge double price for sample, but will return after ordering.

The price is negotiable. It can be changed according to your quantity or package.

### 5.Trade terms: EXW.FOB.CIF.

### 6.What is the transportation?

We are able to send the goods by air/ Express delivery/ Sea.The transportation way is depended on the customer.

### 7.Package & Carton:

All tables packed in KD, chairs is semi-KD(meaning the seat cushion is unfixed). Use 5-layer K=A 210pounds export standard carton. Your shipping marks can be printed on a carton.

### 8.About OEM:

OEM Is available, you can send your own design or picture to us.We can make the product as you like.

### 9.Payment Term or other question:

T/T and Western Union are accepted .

T/T:30% Deposit ,balance paid before shipment

### 10. Lead Time:

About 20-35 days for 1\*40HQ after sending deposit.



**11. Guarantee:**

We guarantee the quality:

For damaged and missing items, we will send replacement after getting related details, such as photo or video.

**12. Where is your factory located? How can I visit there?**

Our factory is located at No. 2, Longshou Development Zone, Shibei Neighborhood Committee, Longjiang Town, Shunde District, Foshan City. Warmly welcome you to visit our factory! When we have free time, we can pick you up anywhere, don't forget to contact us first.

Want further information pls email me or chat with me on TradeManager directly.

**Welcome to Foshan HAOWEI Furniture!**



**Foshan Haowei Furniture Co., Ltd.**



188 2323 6674



hbwfurniture1993@163.com



hbwhotelfurniture.com

No.4 Longfeng Road, Shibei Industrial Zone, Longjiang Town, Shunde District, Foshan City, Guangdong Province