



HAOBOWEI  
HOTEL FURNITURE  
— 豪柏威 —

Foshan Haobowei Furniture Co., Ltd.  
hbwhotelfurniture.com



## Customized Ash Wood Frame Sheraton Five Star Resort King Size Bedroom Set Furniture

Our Product Introduction

for more products please visit us on [hbwhotelfurniture.com](http://hbwhotelfurniture.com)

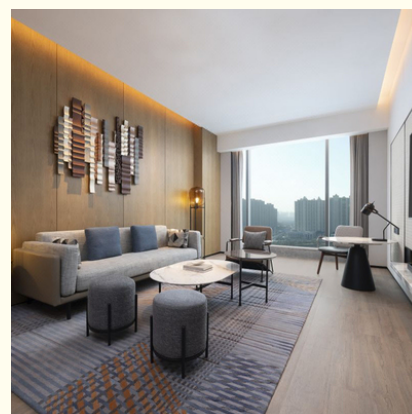
### Basic Information

- Certification: ISO9001, SGS

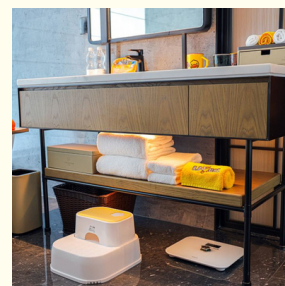
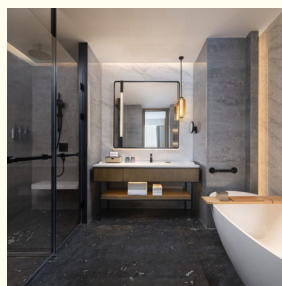
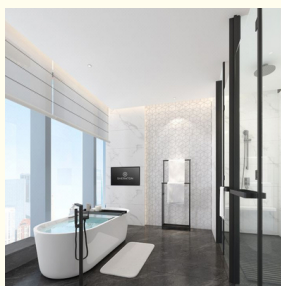
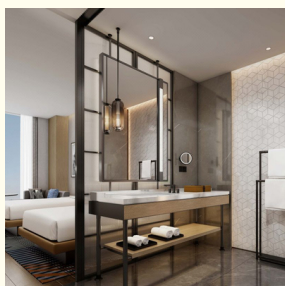


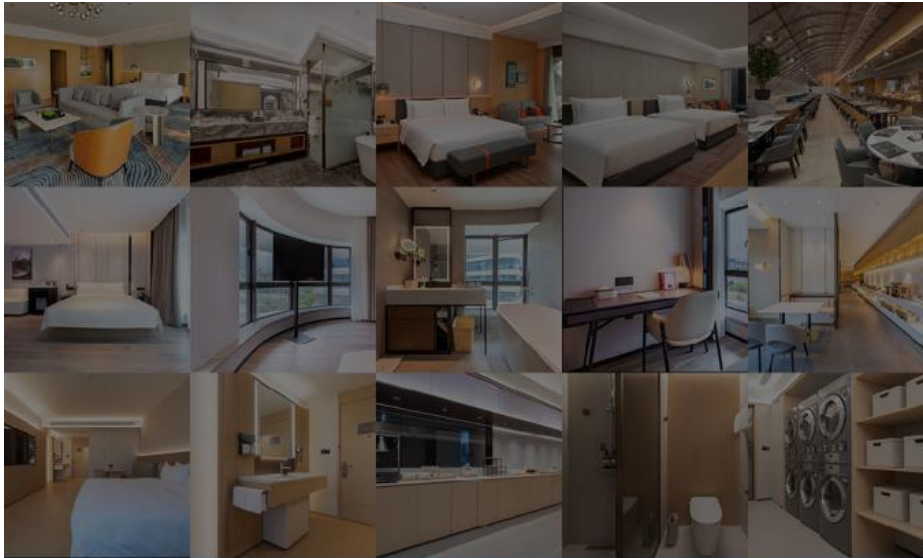
### Product Specification

- Model NO.: SHERATON-TY
- Standard For Hazardous Substances Test: ISO 14184
- Customized: Customized
- Rotary: Fixed
- Condition: New
- Function: Hotel Furniture Bedroom Sets
- Delivery Time: 30-60 Days
- MOQ: 10 Sets
- Quality: The Internal Structure Is Guaranteed For 5 Year
- Three Guarantees: Three Guarantees Within 2 Years
- Repair: Provide Repair Services For A Lifetime
- QC Check: Check Three Times Before Loading.
- OEM/ODM: Can Be Available
- Design: Customization Available



### More Images

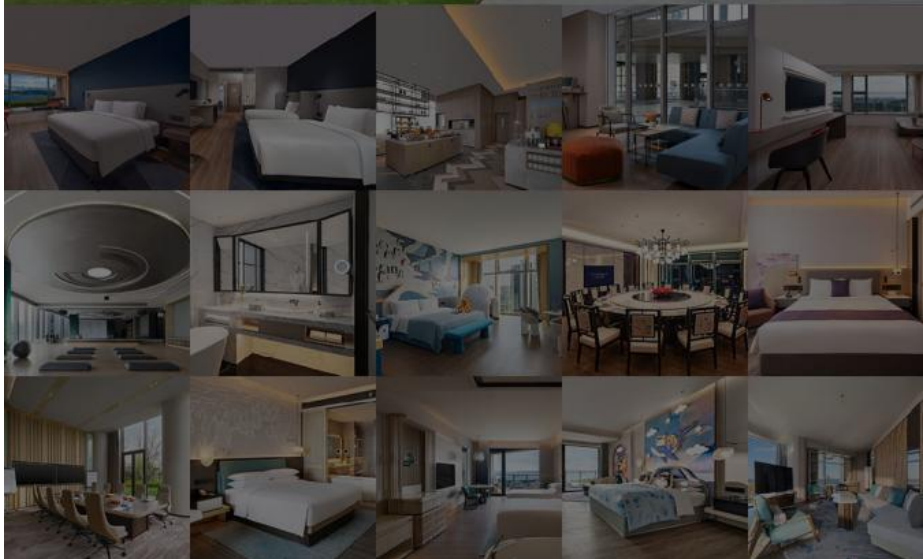




**HAOBOWEI**  
HOTEL FURNITURE

Our professional design and production team is at your  
service 24/7.

- Material selection
- Color options
- Style optional
- Customized packaging
- Size customization







Sheraton Hotels focuses on creating a flexible gathering space for guests and surprise experiences with an open and intuitive design concept.



SHERATON HOTEL BY MARRIOTT Product List

Item Name	(Dimension/mm) L*D*H	QTY	PCS	contain	Excluding
Entrance doors	1040*150*24 20	1	Set	E1 grade plywood with natural wood veneer and "CARPOLY" brand (GP) environmentally friendly paint, Super quiet door leaf, containing steel pipe anti deformation	Door hardware
Door edge wood veneer	12MM	10.55	Square meter	E1 grade plywood with natural wood veneer and "CARPOLY" brand (GP) environmentally friendly paint	
wardrobe	2050*560*24 00	1	Set	E1 grade plywood with natural wood veneer and "CARPOLY" brand (GP) environmentally friendly paint, Hanging clothes pole, hardware handle, stainless steel decoration	Light belt
TV background leather hard bag	2620*80*165 0	1	Set	E1 grade plywood, leather blister hard package, stainless steel frame.	

TV background fabric hard bag	3250*12*2950	1	Set	E1 grade plywood, fabric vacuum molded hard bag
Indoor wood veneer	12MM	10.65	Square meter	E1 grade plywood with natural wood veneer and "CARPOLY" brand (GP) environmentally friendly paint
Bed background hard pack	3240*12*1750	1	Set	E1 grade plywood, fabric vacuum molded hard bag
Bed screen	1920*230*1200	1	Set	E1 grade plywood, domestic high-quality leather, high-density sponge
Bedstead	1800*2000*300	1	Set	E1 grade plywood, domestic high-quality leather, high-density sponge, stainless steel edging,
Chair	Convention	1	Set	White wax wood solid wood, solid wood inner frame, "CARPOLY" brand (GP) environmentally friendly paint, high-quality fabric, high-density sponge, stainless steel
Desk	φ900*750	1	Set	White wax wood solid wood, E1 grade plywood with technology wood veneer, "CARPOLY" brand (GP) environmentally friendly paint, artificial marble surface.
Bedside table	600*500*550	2	Set	E1 grade plywood with technology wood veneer, "CARPOLY" brand (GP) environmentally friendly paint
Sofa	1750*850*800	1	Set	White wax wood solid wood, solid wood inner frame, using "CARPOLY" brand (GP) environmentally friendly paint, high-quality fabric, high-density sponge
Bench	1600*450*450	1	Set	White wax wood solid wood, solid wood inner frame, "CARPOLY" brand (GP) environmentally friendly paint. Domestic high-quality fabric, high-density sponge
Minibar	1000*550*1400	1	Set	E1 grade plywood with technology wood veneer, "CARPOLY" brand (GP) environmentally friendly paint
Wash basin cabinet	1000*550*730	1	Set	E1 grade plywood with technology wood veneer, "CARPOLY" brand (GP) environmentally friendly paint



**HAOBOWEI**  
HOTEL FURNITURE



**Project Case**  
SHERATON Hotel Room Furniture



\*For more material details, please consult us



**HAOBOWEI**  
HOTEL FURNITURE



**SHERATON**  
EST. 1927

**Project Case**  
Hotel Room Furniture



**King Size Bedroom**

Bedroom & Washroom

\*For more material details, please consult us





**HAOBOWEI**  
HOTEL FURNITURE



SHERATON  
EST. 1927

**Project Case**  
Hotel Room Furniture



## Double Bed Room



## Bedroom & Washroom

\*For more material details, please consult us



**HAOBOWEI**  
HOTEL FURNITURE



SHERATON  
EST. 1927

**Project Case**  
Hotel Room Furniture



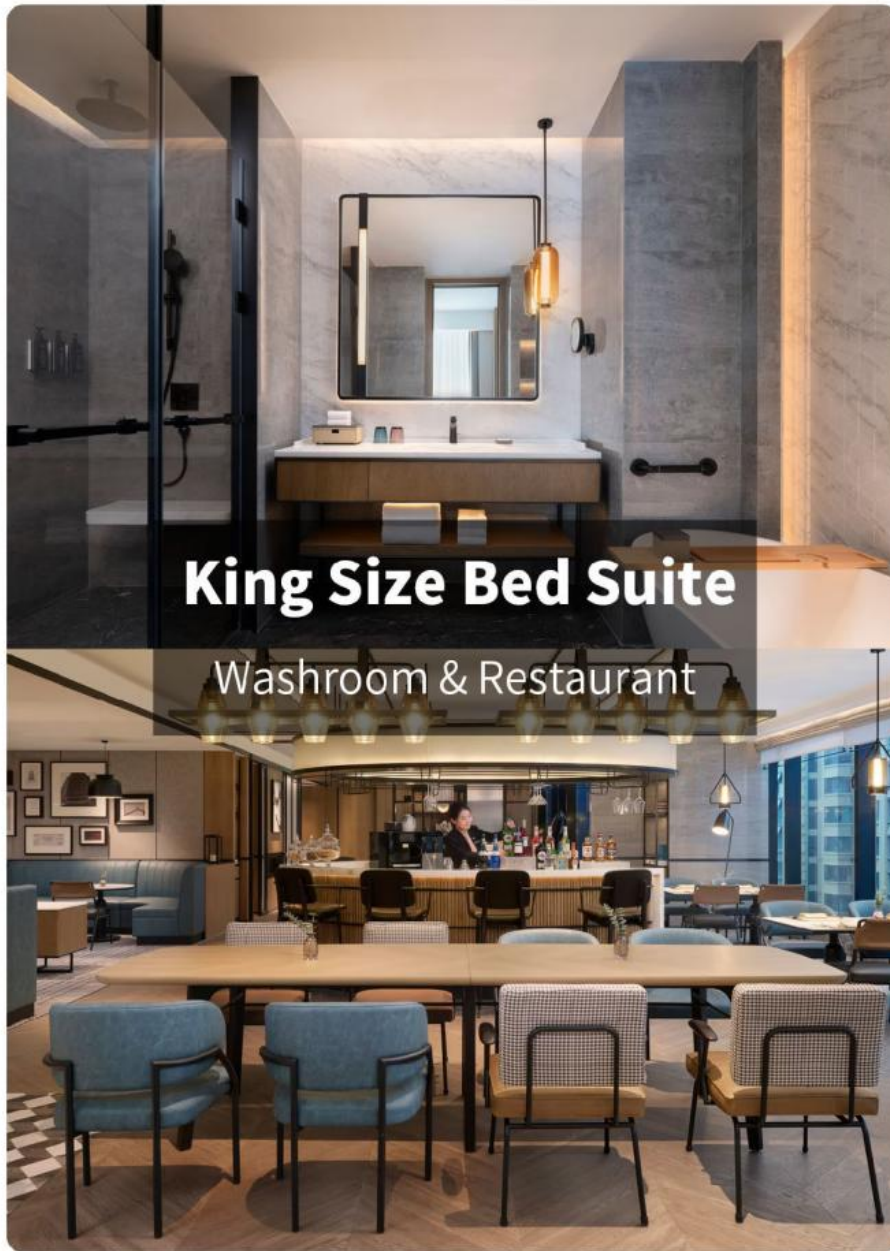
## King Size Bed Suite

Bedroom & Living room



\*For more material details, please consult us





\*For more material details, please consult us



\*For more material details, please consult us



**King Size Bed Suite**  
Study & Bathroom

\*For more material details, please consult us





**HAOBOWEI**  
HOTEL FURNITURE



SHERATON  
EST. 1927

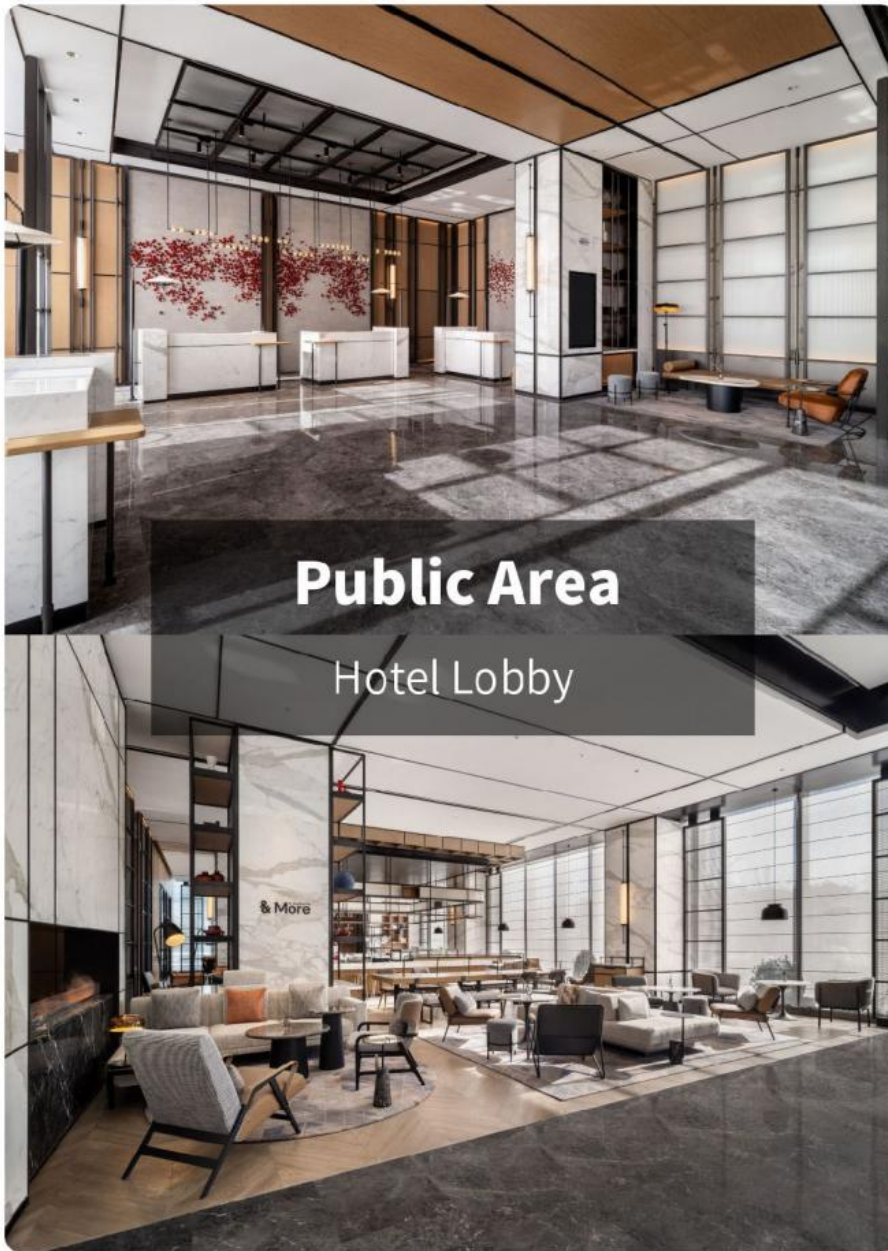
**Project Case**  
Hotel Room Furniture



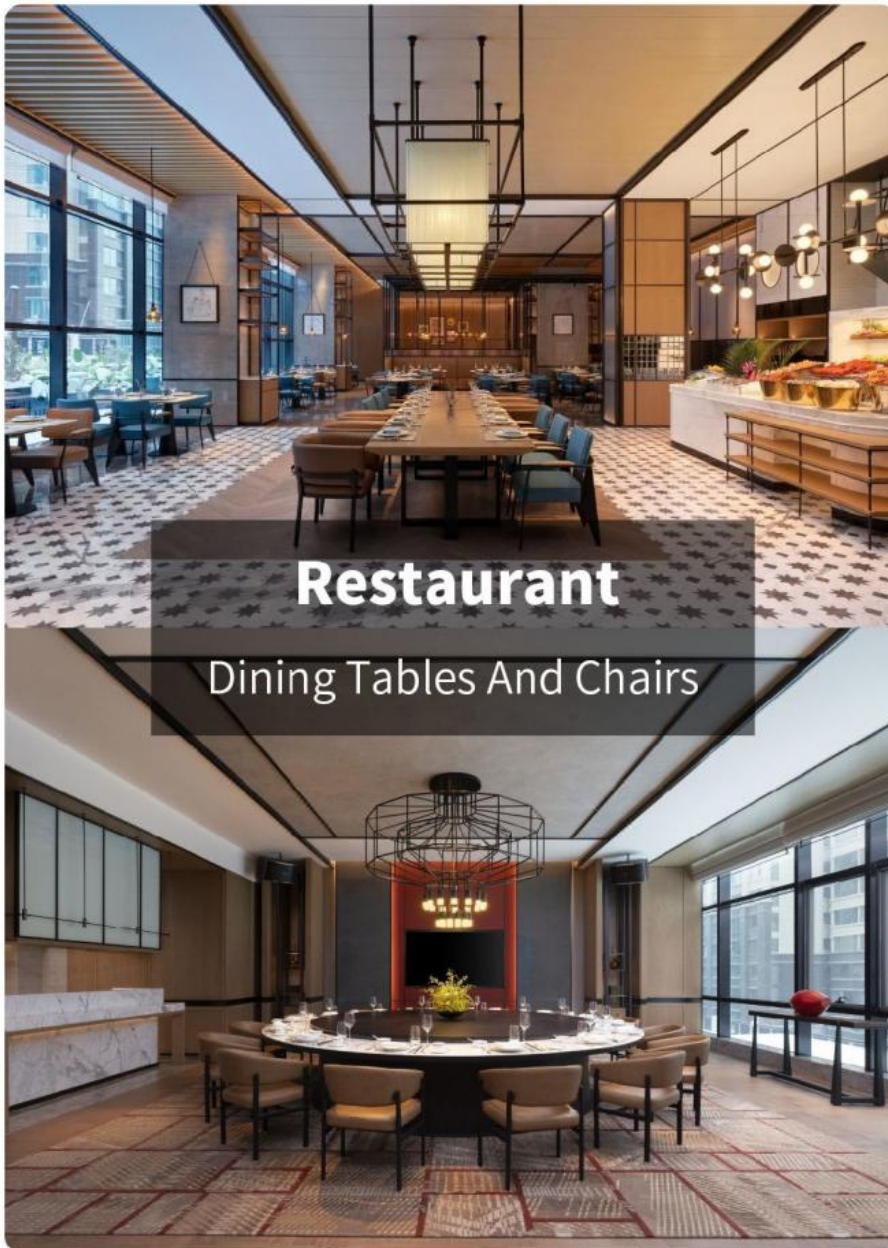
**Double Bed Room**

Bedroom & Washroom

\*For more material details, please consult us

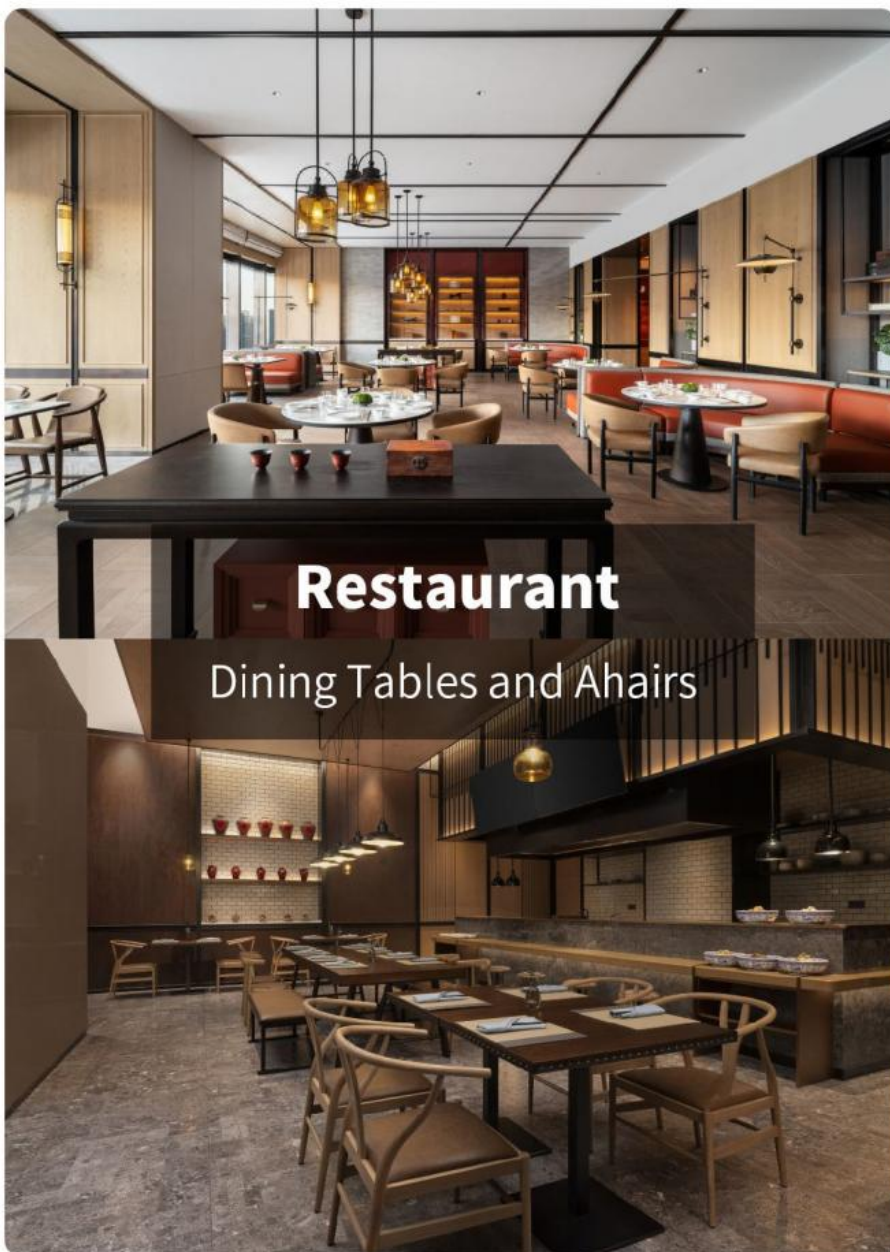


\*For more material details, please consult us



\*For more material details, please consult us

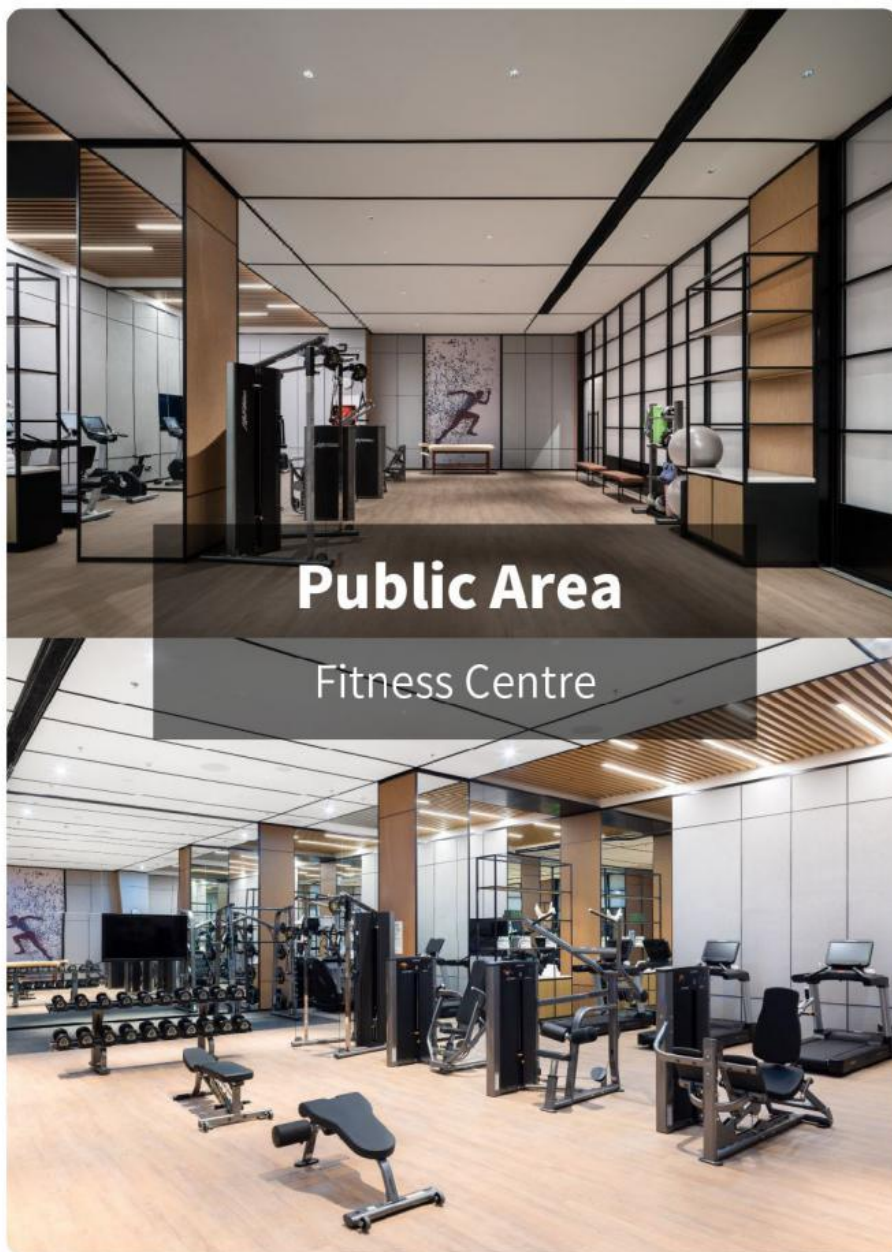




\*For more material details, please consult us



\*For more material details, please consult us



\*For more material details, please consult us





**HAOBOWEI**  
HOTEL FURNITURE

## Customizable Materials



- Full top grain leather
- Semi top grain leather
- Top grain leather
- More



- Solid wood board.
- Solid wood multi-layer board
- Solid wood particle board.
- More



- North American black walnut.
- North American hard maple.
- White oak
- More



- Cotton cloth
- Linen cloth
- Cotton and linen cloth
- More

\*For more material details, please consult us

## Customizable Materials

Genuine leather



Full top  
grain leather



Semi top  
grain leather



Top grain  
leather



Microfiber  
leather



Nappa  
leather



tumbled  
leather



Full frosted  
leather



Lightly frosted  
leather



Waxed oil  
leather

\*For more material details, please consult us



**HAOBOWEI**  
HOTEL FURNITURE

## Customizable Materials

### Imitation leather



#### Polyurethane Synthetic Leather

It is an artificial synthetic material, which has the appearance and texture similar to that of natural leather, but the cost is relatively low.

### Ecological leather

It can simulate the appearance and touch similar to that of natural leather and has certain performances such as abrasion resistance and scratch resistance.



#### Science and technology fabric

Technical fabric features similar appearance and texture to natural leather, good breathability, abrasion resistance, easy cleaning, high cost-effectiveness and rich colors.

\*For more material details, please consult us



## Customizable Materials

Choose the board



Medium Density  
Fiberboard



Solid Wood  
Particle Board



Solid Wood  
Multi-layer Board



Solid Wood  
Board



Decorative  
High-pressure Laminate



Moisture-proof  
Board

Choose the craft.



Glossy



Matte



Wood Veneer

\*For more material details, please consult us

# Customizable Materials

## Solid wood



Black Walnut  
Wood



Hard Maple  
Wood



White oak Wood



Cherry Wood



aSH Wood



Red Oak Wood



Fraxinus  
Mandshurica



Beech Wood



Pine Wood

\*For more material details, please consult us

# Customizable Materials

## Cloth



Cotton cloth



Linen cloth



Velvet cloth



Cotton and linen  
cloth



Canvas



Corduroy



Chenille



Oxford



Frosted Velvet

\*For more material details, please consult us

Factory

Shooting





# Global supplier of star rated hotels

21 years of professional hotel furniture at the source factory



A common choice among many star rated hotels

1000+successful hotel cases



Project

Cases

## Project Cases

Soft decoration, fixed decoration, and activity furniture are all from HAOBOWEI



HOLIDAY INN  
EXPRESS



HYATT HOTEL



WYNDHAM  
HOTELS&RESPTS



MARRIOTT  
BONVOY



SHANGRI-LA



MERCURE HOTEL



JI HOTEL



ATOUR HOTEL



More  
project cases

\*For more material details, please consult us

Industry Qualifications



**HAOBOWEI**  
HOTEL FURNITURE

# The source factory in Foshan, Guangdong, China.



## Process team

With over 200 technicians, we serve you throughout the entire process from customized production to quality inspection



## Advanced equipment

Equipped with a specialized product research and development center, the company has introduced a complete set of world-class equipment



## Strict testing

Strict process flow, acceptance standards, and advanced quality assurance system require strict testing before leaving the factory



## After sales guarantee

1. Internal structure guaranteed for five years
2. Two years and three guarantees
3. Lifetime warranty







## SHIPPING & PAYMENT



### 1.How to get a quote quickly?

All of our products can be customized. We can meet you any requirement of the size, shape, design, logo. we will be appreciated if you can provide the information below before quote you the price:

- A.Bag style.
  - B.Material structure and thickness.
  - C.Packaging.
  - D.Demension (width & length & height)
  - E.The logo and color request.
  - F.If possible,pls provide the artwork of the products and packaging.If you are not clearly,we will recommend for you.
- With above information we can quote you the exact price immediately.

### 2.What is your MOQ?

A: If customer have agent in China arrange the delivery shipping for you, there will be no MOQ limited, that means customer can order 1 piece and the price will be offered as EXW factory price.

B: if customer needs us arrange the delivery shipping, the MOQ will be one set (the total cubic number of the order must more than 3 CBM). But mixed order can be accepted. That means each design each item customer can select only one piece, till 3CBM full.

C: About Min Order Quantity, normally is one 20ft container, several items mixed.Small quantity is acceptable for trial order.

### 3.What is the Shipping Cost?

If you want to know the shipping freight, The shipping cost is determined by the destination port, weight, packing size, total CBM of the goods . It is difficult for us to quote you the exactly shipping fee without knowing your total quantity of the order and your destination sea port; we will quote you the good shipping cost after receive your feedback.

### 4.About Price:

Sample order:

Sample is available for customer to check the quality.

We will charge double price for sample, but will return after ordering.

The price is negotiable. It can be changed according to your quantity or package.

### 5.Trade terms: EXW.FOB.CIF.

### 6.What is the transportation?

We are able to send the goods by air/ Express delivery/ Sea.The transportation way is depended on the customer.

### 7.Package & Carton:

All tables packed in KD, chairs is semi-KD(meaning the seat cushion is unfixed). Use 5-layer K=A 210pounds export standard carton. Your shipping marks can be printed on a carton.

### 8.About OEM:

OEM Is available, you can send your own design or picture to us.We can make the product as you like.

### 9.Payment Term or other question:

T/T and Western Union are accepted .

T/T:30% Deposit ,balance paid before shipment

### 10. Lead Time:

About 20-35 days for 1\*40HQ after sending deposit.

**11. Guarantee:**

We guarantee the quality:

For damaged and missing items, we will send replacement after getting related details, such as photo or video.

**12. Where is your factory located? How can I visit there?**

Our factory is located at No. 2, Longshou Development Zone, Shibu Neighborhood Committee, Longjiang Town, Shunde District, Foshan City. Warmly welcome you to visit our factory! When we have free time, we can pick you up anywhere, don't forget to contact us first.

Want further information pls email me or chat with me on TradeManager directly.

**Welcome to Foshan HAOBOWEI Furniture!**



**Foshan Haobowei Furniture Co., Ltd.**



188 2323 6674



hbwfurniture1993@163.com



hbwhotelfurniture.com

No.4 Longfeng Road, Shibu Industrial Zone, Longjiang Town, Shunde District, Foshan City, Guangdong Province